

# laundry collection

---

Instructions for use and warranty details

Clothes Dryer

Model No.: KCDV60

 **kLEENmaid**

Dear Customer,

Thank you and congratulations for choosing Kleenmaid.

Your new appliance has been designed and meticulously tested to ensure that it meets all your culinary requirements, and has been carefully manufactured using top quality materials to give you years of reliable performance.

For best results, carefully read the instructions on how your new appliance is to be installed. Correct installation will avoid delays and unnecessary service call costs.

Once installation is complete, please read this instruction manual carefully and get to know the controls and the features of your new Kleenmaid appliance. These simple instructions will enable you to achieve excellent results from the very first time you use it.

Again, congratulations and thank you for choosing The Best You Can Own.

KLEENMAID

---

# CONTENTS

---

## SAFETY INSTRUCTIONS

- Safety Instructions ..... 2

## INSTALLATION

- Product Description ..... 7
- Installation ..... 7

## OPERATIONS

- Quick Start ..... 9
- Before Each Drying ..... 10
- Control Panel ..... 11
- Drying Programmes Table ..... 12

## MAINTENANCE

- Cleaning And Care ..... 13
- Trouble Shooting ..... 14
- Technical Specifications ..... 15

# SAFETY INSTRUCTIONS

---

## ■ Safety Instructions

- The appliance is not intended for use by persons (including children) with reduced physical, sensory or mental capabilities, or lack of experience and knowledge, unless they have been given supervision or instruction concerning use of the appliance by a person responsible for their safety.
- Children should be supervised to ensure that they do not play with the appliance. In EN standard countries, this appliance can be used by children from 8 years and above and persons with reduced physical, sensory or mental capabilities or lack of experience and knowledge if they have been given supervision or instruction concerning use of the appliance in a safe way and understand the hazards involved. Children shall not play with the appliance. Cleaning and user maintenance shall not be made by children without supervision.
- The tumble dryer is not to be used if industrial chemicals have been used for cleaning.
- The lint trap has to be cleaned frequently.
- Lint must not be allowed to accumulate around the tumble dryer.
- Do not dry unwashed items in the tumble dryer.
- Items that have been soiled with substance such as cooking oil, acetone, alcohol, petrol, kerosene, spot removers, turpentine, waxes and wax removers should be washed in hot water with a extra amount of detergent before being dried in the tumble dryer.
- Items such as foam rubber (latex form), shower caps, waterproof textiles, rubber backed articles and clothes or pillows fitted with foam rubber pads should not be dried in the tumble dryer.

## SAFETY INSTRUCTIONS

---

- Fabric softeners, or similar products, should be used as specified by the fabric softener instructions.
- The final part of a tumble dryer cycle occurs without heat (cool down cycle) to ensure that the items are left at a temperature that will not damage them.

### **⚠ Warning!**

Never stop a tumble dryer before the end of the drying cycle unless all items are quickly removed and spread out so that the heat is dissipated.

- The exhaust air must not be discharged into a flue which is used for exhausting fumes from appliances burning gas or other fuels.
- The appliance must not be install behind a lockable door, a sliding door or a door with a hinge on the opposite side to that of the tumble dryer in such a way that full opening of the tumble dryer door is restricted.
- Oil-affected items can ignite spontaneously, especially when exposed to heat sources such as in a tumble dryer. The items become warm, causing an oxidation reaction in the oil. Oxidation creates heat. If the heat cannot escape, the items can become hot enough to catch fire. Piling, stacking or storing oil-affected items can prevent heat from escaping and so create a fire hazard.
- The appliance should not be overturned during normal use or maintenance.
- Remove all objects from pockets such as lighters and matches.

## SAFETY INSTRUCTIONS

---

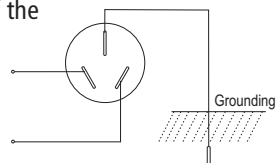
- For appliances with ventilation openings in the base - floor coverings must not obstruct the openings.
- If the power cable is damaged, it must be replaced by the manufacturer, its service agent or similarly qualified persons in order to avoid a hazard.
- Children of less than 3 years should be kept away unless continuously supervised.
- Plug must be accessible after installation.

## SAFETY INSTRUCTIONS

### • Power supply and grounding

The dryer employs alternative current with the rated voltage and frequency. When the voltage fluctuates within 6% of rated voltage, the dryer can work normally. A special power socket with a capacity  $\geq 10A$  for the dryer should be installed beside the dryer for convenience and safety. The method of connection of the socket is as the figure at right.

To be safe, please make improvements as soon as possible according to the rules and suggestions mentioned above.



### ⚠ Warning!

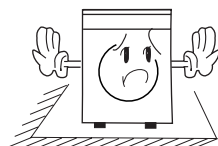
The socket and the grounding wire must be installed by an electrician to prevent incorrect installation or use of the socket and to guarantee the safety of use of electricity. No connection of the grounding wire and the neutral wire, otherwise the cabinet will be charged, which is likely to cause the danger of electric shock.

### • Precautions

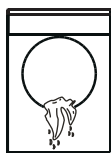
Install or store where it will not be exposed to temperatures below freezing or exposed to water or weather, which could cause permanent damage and invalidate the warranty.



Keep area around the exhaust opening and adjacent surrounding areas free from the accumulation of lint, dust and dirt. An obstructed port might reduce the airflow.



Thoroughly spin the laundry in washing machine. High spin speed can reduce the drying time and save energy consumption.

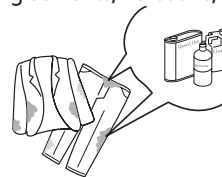


Make sure combustible sprayer will not be close to dryer when it is working, and once the gas leaks, do not touch plug or start/pause on it.

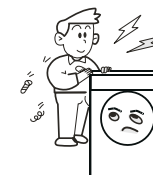


## SAFETY INSTRUCTIONS

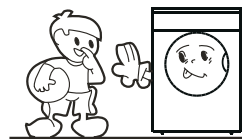
Do not wash or dry articles that have been cleaned in, washed in, soaked in or spotted with combustible or explosive substances (such as wax, oil, paint, gasoline, degreasers, dry-cleaning solvents, kerosene, etc.).



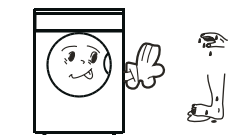
Never attempt to operate this appliance if it is damaged, malfunctioning, partially disassembled, or has missing or broken parts, including a damaged cord or plug.



Do not allow children on or in the appliance. Close supervision of children is necessary when the appliance is used near children.



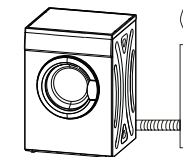
Please do not use the machine when your foot or hand is wet.



Do not store plastic, paper or clothing that may burn or melt on top of the dryer during operation.



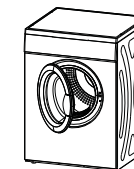
The exhaust air must not be discharged into a flue which is used for exhausting fumes from appliances burning gas or other fuels.



Do not dry articles containing rubber, plastic or similar materials such as padded bras, tennis shoes, galoshes, bath mats, rugs, bibs, baby pants, raincoats, plastic bags or pillows that may melt or burn. Some rubber materials, when heated, can under certain circumstances produce fire by spontaneous combustion.

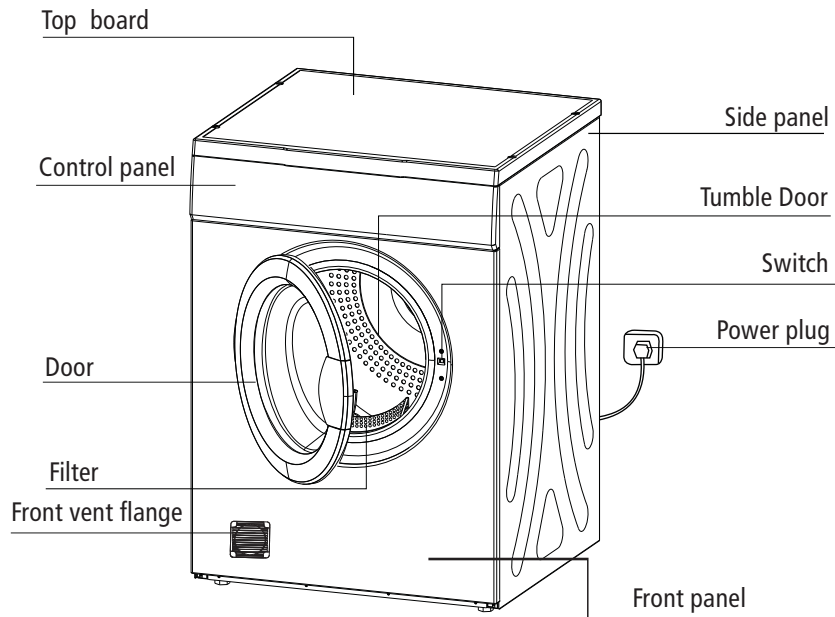


The door should be opened only after the programme of the clothes dryer is completed. Do not open the door before the programme is finished to avoid human skin being scalded by hot steam or an over heated clothes dryer.



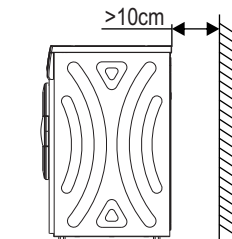
# INSTALLATION

## ■ Product Description



## ■ Installation

- Dryer should be placed in a ventilated area with not less than 10cm distance from the wall. It is suggested there are no obstacles within 1.5m in front of dryer to ensure adequate ventilation.



# INSTALLATION

## • Level Installation:

Use a spirit level or similar method to ensure that after installation the top of the dryer is level from side to side and from front to back. To make adjustments pack solid, non-combustible material under the relevant corner of the dryer, ensuring that it is stable. This will only be required if the floor upon which the dryer is installed is not level.

## ⚠ Note!

If dryer is not placed horizontally (the lean angle is no more than  $2^\circ$ ), the dryer may become unbalanced or stop working.

## Notice when installing:

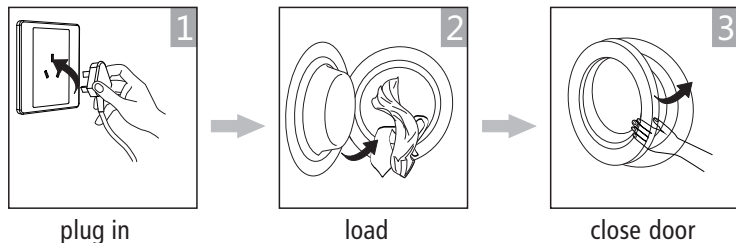
- Do not install the dryer in the open air or a place where it may be damaged by rain.
- Do not place the back of dryer near curtains or anything that may blow in the wind.
- Do not place the dryer near gas or other flammable substances.

# OPERATIONS

## ■ Quick Start

### 📌 Note!

Before using, please make sure it's installed properly.

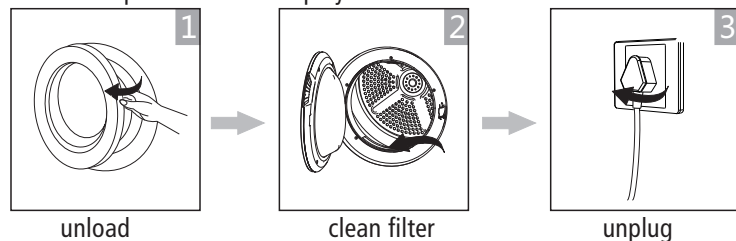


## Drying



## After Drying

Buzzer beep or "0:00" on display.



# OPERATIONS

## ■ Before Each Drying

1. Before drying, thoroughly spin the laundry in washing machine. High spin speed can reduce the drying time and save energy consumption.
2. For uniform drying result, sort the laundry according to fabric type and drying programme.
3. Before drying, please close zips, hooks and eyelets, do buttons up, tie fabric belts, etc.
4. Do not over dry the clothes, because over dried clothes can easily get creases.
5. Do not dry articles containing rubber or similar elastic materials.
6. The door can be opened only after the dryer programme is finished to prevent human skin being scalded by hot steam or over heated drying machine.
7. Clean the lint filter and empty container after each use to avoid extension of drying time and energy consumption.
8. Do not dry clothes after dry-clean process.

The reference weight of dry clothes (each)

Mixed-fabric clothes (about 800g)	Jacket (about 800g cotton)	Jeans (about 800g)	Towel quilt (about 900g cotton)
Single bedsheet (about 600g cotton)	Work clothes (about 1120g)	Sleepwear (about 200g)	Long sleeve shirt (about 300g cotton)
Short sleeve shirt (about 180g cotton)	Short pants (about 70g cotton)	Socks (about 50g mixed-weave)	

### 📌 Note!

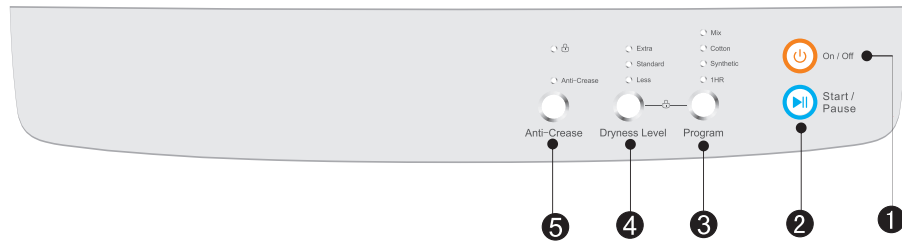
- Never overload dryer.
- Not for textiles with dripping water. The dryer could be damaged or catch fire.
- Not suitable for silk or woolen textiles.

Before drying articles in the clothes dryer please consider if the materials should not be tumble-dried or contain the symbols as follows:

Dry	Normal	Not tumble dry normal	Do not dry
Line dry / hang to dry	Drip dry	Dry flat	In the shade
Dry clean	Do not dry clean	Dry clean normal cycle with any solvent	Dry clean normal cycle petroleum solvent only

# OPERATIONS

## Control Panel



### 1 On/Off

Product is switched on or off.

### 2 Start/Pause

Press the button to start or pause the drying cycle.

### 3 Programmes

Different Dryer cycles can be selected according to the user's needs for more effective drying results.

### Note!

- Press the **【Program】** button to select the desired programme.
- Press the **【Dryness Level】** button to select the desired programme.
- Press the **【Anti-Crease】** button to start Anti-Crease function.
- Press the **【Start/Pause】** button.
- If users need child lock function, pressing the **【Program】** and **【Dryness Level】** buttons simultaneously for over 3 seconds to start child lock function.
- The buzzer will prompt from the dryer when finishing the cycle. Press the **【On/Off】** button and pull out the power cable.
- Clean the filter, cabinet and inner tube.
- Clean the filter when the "Filter" light is flashing, after the dryer stop.

# MAINTENANCE

## Drying Programmes Table

Clothing Type	Approximate amount of remaining humidity	Capacity (KG)	Programs	Dryness Level	Note
Cotton	80%-90%	7	Cotton	Extra	Please select the most suitable Program and Dryness Level according to the Type and Capacity of the clothing .
	60%-70%	7 / 3.5	Cotton	Standard	
		7	Cotton	Less	
Mix	70%	7 / 3.5	Mix	Extra	
	60%	7 / 3.5	Mix	Standard	
Synthetic	50%	3.5	Synthetic	Extra	
	40%	3.5	Synthetic	Standard	
Cotton	—	1	1Hr	—	

### Note!

- Cool air function means there is only unheated air circulating in the last 3 minutes (Except 1hour program which runs 10 minutes cool air.)
- If Anti-Crease option is selected, the anti-crease process will increase to 2 hours, otherwise it runs for 30 min.
- The inside temperature and humidity will affect drying time.
- Check the label attached on clothes and choose the right temperature and time according to the explanation.
- "Cotton + Extra" is for AS/NZS energy program.
- Suggestion: When clothes weigh less than 0.5kg, please select an hour dry and Extra for dryness level.

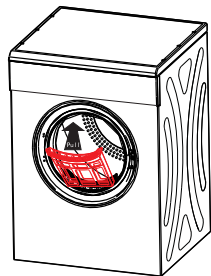


# MAINTENANCE

## ■ Cleaning And Care

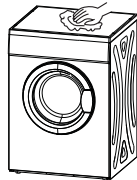
### Filter clean

- Clean the lint filter after each use. Remove by pulling straight up.
- Cleaning filter Use wiping cloth or your fingers.
- Install filter If the filter is cleaned by damp cloth or water, please install after drying in the sun.



### Cleaning cabinet and inner tube

- Use soft damp cloth wipe cleaning cabinet and inner tube.
- Do not rinse directly with water.
- Do not use neutral scour wipe.
- Do not use gasoline or alcohol wipes.
- Make sure to open the front door for aeration after cleaning the inner tube.



### Safety reset

1. These dryers have a safety cut out switch which is activated by temperature.
2. The safety reset button is on the backboard. If your dryer is not heating this button must be reset before the dryer can heat again. You may need to wait 10 minutes for cooling down.
3. The most common reason for the dryer to overheat is a blocked filter.
4. Clean the line filter after each load to prevent overheating of the dryer

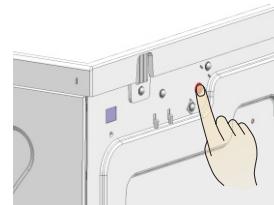
The cut out switch may operate for the following reasons:

1. Lint filter is blocked.
2. Exhaust outlets blocked at the back of the dryer.
3. Poor ventilation in the laundry or room - open a window or door.
4. Lightweight garment eg. handkerchief, sucked over the filter.

# MAINTENANCE

### Safety Reset Button

Use your finger or a pencil to press the button in until you feel it click.



## ■ Trouble Shooting

Trouble	Cause	Solution
Will not start	<ul style="list-style-type: none"> <li>• Power cut.</li> <li>• The power plug is not plugged in firmly.</li> <li>• Dry clothes exceed weight.</li> <li>• The temperature fuse is cut.</li> </ul>	<ul style="list-style-type: none"> <li>• Wait for electricity supply to resume.</li> <li>• Check the power socket, make sure plug tight.</li> <li>• Place clothes in drier after spinning in washing machine. Clothes can not exceed 7kg. P</li> <li>• Replace the temperature fuse.</li> </ul>
External hot or can smell hot	<ul style="list-style-type: none"> <li>• The lint filter is dirty.</li> <li>• The uptake or exhaust duct is dirty.</li> </ul>	<ul style="list-style-type: none"> <li>• Clean the lint filter after each use.</li> <li>• Clean out the stem.</li> </ul>
Clothes too dry	<ul style="list-style-type: none"> <li>• Too many clothes in dryer.</li> <li>• Leaving clothes in the dryer when the cycle is finished.</li> <li>• The clothes are not sorted properly.</li> <li>• The temperature is set too high.</li> </ul>	<ul style="list-style-type: none"> <li>• Make sure the dryer is not too full.</li> <li>• Take out the clothes immediately when finish.</li> <li>• See page 10.</li> </ul> <p>Observe the maintenance label on clothes.</p>
Clothes shrink	<ul style="list-style-type: none"> <li>• Too dry.</li> </ul>	<ul style="list-style-type: none"> <li>• Observe the maintenance label on clothes. If they shrink easily take the clothes out when slightly damp and hang the clothes until fully dry.</li> </ul>
Hairball on clothes	<ul style="list-style-type: none"> <li>• Synthetic fibre and permanent press fibres rub together, causing hairballs on fabric.</li> </ul>	<ul style="list-style-type: none"> <li>• Use dryer net bags to reduce the amount of contact between these types of items. Use fabric softener to lubricate fibres.</li> </ul>

# MAINTENANCE

The sounds from the dryer when running may include:

- Buzz or vibration: Due to heavy wet clothes' turning and bumping. This is normal.  
Air bumping: When drying, machine will generate steam which
- will come out from pipe and cause bumping with the bottom of the inner tub. This is normal.

Error code	description	Criteria	Action after fault detected	Failure indication
E1	Over-temperature	NTC or PCB fault	Stop the program and go to fault state	Led less flashing
E3	Temperature Sensor error	Temperature Sensor is open or PCB fault	Stop the program and go to fault state	Led less and standard flashing
E4	Temperature Sensor error	Temperature Sensor is short or PCB fault	Stop the program and go to fault state	Led extra flashing

## ■ Technical Specifications

Dimension (L*W*H)	555*595*840(mm)
Rated input power	2000W
Rated voltage	220-240V~
Rated frequency	50Hz
Weight of product	35kg
Rated capacity	7.0kg
Ambient temperature	+5°C~+35°C

### 📌 Note!

- The rated capacity is the maximum capacity. Make sure that the dry clothes which are loaded to the appliance do not exceed the rated capacity each time.
- Do not install the tumble dryer in a room in which the temperature is around freezing point as the tumble dryer may not operate well

# KLEENMAID WARRANTY TERMS AND CONDITIONS

1. Compass Capital Services Pty Ltd ABN 96 138 214 525 trading as Kleenmaid will provide parts and labour to you the customer as set out herein.
2. Kleenmaid's Products come with guarantees that cannot be excluded under the Australian Consumer Law. You are entitled to a replacement or refund for a major failure and for compensation for any other reasonably foreseeable loss or damage. You are also entitled to have the goods repaired or replaced if the goods fail to be of acceptable quality and the failure does not amount to a major failure.
3. The benefits given to you under this Kleenmaid Warranty are in addition to other rights and remedies to which you may be entitled under the Australian Consumer Law in relation to the Product to which this Kleenmaid Warranty relates. Subject to the conditions below, the Product is warranted by Kleenmaid and/or its agents to be free from defects in materials and workmanship for the Warranty Period for normal Domestic Use.
4. Product Identification: -
  - a. Kleenmaid reserves the right to reject claims for any services or work where you cannot produce for verification the serial number and a proof of purchase for the Product (including but not limited to the original invoice).
  - b. This Kleenmaid Warranty will be voided if the serial number for the Product cannot be verified. This is not intended to exclude, restrict or modify any right or remedy to which you may otherwise be entitled under the consumer guarantee provisions of the Australian Consumer Law.
  - c. In the event that a request for repair is made against this Kleenmaid Warranty where the serial number for the Product cannot be verified or you cannot produce for verification a proof of purchase for the Product (including but not limited to the original invoice), the repairer will not carry out any repairs on the Product and you will be charged a service call-out fee.
5. What is covered by this Kleenmaid Warranty: -
  - a. The Product is covered for faulty workmanship or parts that have failed under normal Domestic Use.
  - b. Kleenmaid and/or its agents will determine by objective testing if there are any defects in the Product and/or faulty workmanship.
  - c. This Kleenmaid Warranty is only applicable if repairs on Products are carried out within Mainland Australia.
  - d. This Kleenmaid Warranty: -
    - i. covers a Product purchased as new, manufactured for use in Mainland Australia;
    - ii. commences from the date of delivery of the Product;
    - iii. provides for the labour and replacement parts necessary to maintain the Product in good operating condition as specified in this Kleenmaid Warranty, however, if repair is needed because of Product failure during normal Domestic Use, Kleenmaid has the option to repair or replace the defective Product or part of the Product with a product or part of like kind and quality. A replacement part may be new or reconditioned of like kind and quality and may cost less than the original Product purchased and no charges or refunds will be made based on the replacement product or part cost difference; and
    - iv. is only applicable when the Product is used and operated in accordance with the Manufacturer's instructions.
6. What is not Covered by this Kleenmaid Warranty (excluded):-
  - a. any damage or failure to or of the Product or part of the Product:
    - i. due to the Product being inadequately serviced to manufacturer's recommendations;
    - ii. resulting from environmental conditions including and not limited to dirt, dust, rodents, insects, rust, corrosion, salt built-up, of or in any part of the Product;
    - iii. resulting from excessive use but fair wear and tear is excepted;
    - iv. resulting from poor installation including and not limited to positioning and externally fitted equipment such as plumbing and drainage, cabling, antennae or due to incompatibility of connected equipment;
    - v. caused by overheating as a result of sitting or positioning of the Product, where there is no provision for adequate ventilation or adequate protection from excessive dust;
    - vi. if the Product has been dismantled, repaired or serviced by any person other than someone authorised by Kleenmaid or its agents or representatives;
    - vii. caused by power surges or spikes, including and not limited to, mains power and telecommunications connections, or to other unspecified sources, incorrect power current, voltage fluctuation, amperage fluctuation, rust or corrosion;
    - viii. if the Product is dropped, collision of the Product with another object, use for which the Product is not designed, damage to the Product caused by your own negligence, accidental or deliberate misuse of the Product by you, theft, abuse, vandalism, flood, fire, earthquake, electrical storms or any other act of God or any war related events; or
    - ix. due to the introduction of abnormal heat loads to the Product;
  - b. costs of attendance and testing where no fault or defect covered by the terms of this Kleenmaid Warranty is identified in the Product;
  - c. initial setup and installation of the Product;
  - d. normal maintenance costs and costs incurred through the installation of items listed as requiring periodic replacement;
  - e. Products with removed or altered serial numbers;
  - f. consumables such as but not limited to bulbs/globes, glass, seals, filters, batteries and remote controls;
  - g. removal and reinstallation of an internal component not performed by an authorised Kleenmaid agent or representative or authorised service centre;

- h. cosmetic or structural items; or
  - i. any failures due to interference from or with other products and/or sources.
7. This Kleenmaid Warranty ceases if: -
    - a. the Product ceases to carry the original manufacturer's serial number or is sold at an auction;
    - b. the Product is rented;
    - c. damage to the Product has occurred as listed in point 7a; or
    - d. there is failure to pay monies owing on invoices as a result of non-warranty work been carried out at the request of the end user as per point 16 below.
  8. Neither Kleenmaid nor its representatives provide loan equipment under the terms of this Kleenmaid Warranty.
  9. Any unauthorised access to the internal hardware of the Product will void this Kleenmaid Warranty.
  10. Repair Notice: Products presented for repair may be replaced by refurbished Products of the same type rather than being repaired. Refurbished parts may be used to repair the Products.
  11. Replacement items are "like for like" and is not "new for old" and does not indicate in any way that a faulty Product will be replaced with a new part or unit. "Like for like" may either be a quality checked, refurbished or reconditioned unit of the same or later batch of model/size/specifications
  12. The cost of making a claim under this Kleenmaid Warranty is not covered by Kleenmaid, including any costs of transportation or travel expenses between your home and your nearest authorised service agent.
  13. Kleenmaid accepts no liability for items that are lost, damaged, or stolen as a result of freight, transport or storage. If you are required to transport the Product to an authorised service centre, you must ensure that it is securely packed and insured.
  14. On Public Holidays or other periods when regular business and wholesale operations are temporarily ceased, repairer availability and warranty response times may extend beyond the standard response times due to the unavailability of repairers and parts.
  15. For any repair performed on a Product under this Kleenmaid Warranty where no fault can be found, or the item is deemed by Kleenmaid or an authorised agent, to be not faulty under this Kleenmaid Warranty, or the repair or fault is not covered under this Kleenmaid Warranty, a 'No Fault Found' fee is payable by you. Kleenmaid will advise you of this cost and seek your agreement to pay such costs before commencing such repairs.
  16. Any repairs or services required that are outside the terms and conditions of this Kleenmaid Warranty can be carried out at your request at your cost (including where the Product has not been installed or set up correctly). Kleenmaid will always advise you of this cost and seek your agreement to pay such costs before commencing such repairs. A credit card may be required prior to the commencement of such services.
  17. Extra charges will be payable by the customer should the Product not be readily accessible without special equipment, such as but not limited to cranes and lifts or should the Product be installed in a position that service access is blocked and/or repair work is not possible without uninstalling the Product to gain access.
  18. You, the customer, may be entitled to purchase an extended warranty in respect of the Product. Any extended warranty will not be issued by Kleenmaid but by a third party. Any extended warranty services will be provided directly by the third party as principal and not as agent for Kleenmaid, under their extended warranty terms and conditions and not under this Kleenmaid Warranty.
  19. To make a claim under this Kleenmaid Warranty, please have your proof of purchase and the serial number of the Product ready and call (02) 9310 1207 during business hours.
  20. This Kleenmaid Warranty is given by:
    - Name: Compass Capital Services Pty Ltd ABN 96 138 214 525 trading as Kleenmaid
    - Business address: Level 2, Suite 3, 204 Botany Rd, Alexandria NSW Australia 2015
    - Telephone: (02) 9310 1207
  21. Definitions:
    - a. **Australian Consumer Law** means the *Competition and Consumer Act 2010* (Cth).
    - b. **Domestic Use** means use of the Product for personal, domestic or household purposes.
    - c. **Kleenmaid** means Compass Capital Services Pty Ltd ABN 96 138 214 525 trading as Kleenmaid.
    - d. **Mainland Australia** means the following States and Territories of Australia: New South Wales, Victoria, South Australia, Western Australia, Queensland, Tasmania, Northern Territory, Australian Capital Territory.
    - e. **Product** means the appliance sold by Kleenmaid to you as evidenced by the original purchase invoice.
    - f. **Warranty Period** means the period of 36 months for domestic use, 12 months for non-domestic use or such alternative period as may be specified.

**UPDATE NOTICE:** This Kleenmaid Warranty is current as at 7 March 2017 but is subject to variation from time to time. For the latest version of the Kleenmaid Warranty, please see our website <http://www.kleenmaid-appliances.com.au/support/your-kleenmaid-warranty> or phone us on (02) 9310 1207.







## Other products available in the Kleenmaid range of appliances

---

- | Washing machines
- | Clothes dryers
- | Dishwashers
- | Ovens
- | Cooktops
- | Steam ovens
- | Microwave ovens
- | Built in espresso  
coffee machines
- | Rangehoods
- | Freestanding ovens

Compass Capital Services Pty Limited  
trading as Kleenmaid  
ABN 96138214525

Level 2, 204 Botany Road  
Alexandria NSW 2015

E: [support@kleenmaid.com.au](mailto:support@kleenmaid.com.au)  
[www.kleenmaid.com.au](http://www.kleenmaid.com.au)

